

JA JobSpark

Inspiring our future workforce.



SEPTEMBER 20-21, 2022
INDIANA STATE FAIRGROUNDS



Presented by:



ELI LILLY
AND COMPANY
FOUNDATION, INC.



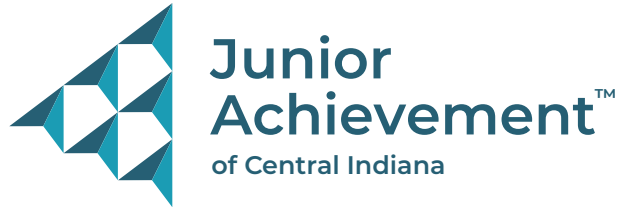
LILLY FOR BETTER

At Lilly, we are constantly evolving the way we discover, develop and manufacture medicines to bring new treatments to the people who need them even faster – and expand access to these medicines for even more people around the world.

lilly.com

2020 CA Approved for External Use PRINTED IN USA ©2020, Eli Lilly and Company. ALL RIGHTS RESERVED.

Lilly



Dear Students,

Welcome! This is an exciting time in your life and in your school career! You have the opportunity to explore wonderful options for your future, and to experience firsthand the types of work available and skills utilized across a wide variety of business and industry sectors.

I hope that today, during JA JobSpark, you will learn about exciting jobs and industries previously unfamiliar to you and connect with professionals in those fields who will share their real-life experiences and guidance. Consider all the possibilities out there, and begin to connect your interests and strengths with your future career options. Spend this time to discover what excites you...what professions make you want to learn more...and then go for it!



Keep this program book to help guide you on your journey toward an amazing future. Be thoughtful about your many options, and then be bold and follow your passion! It's important that you create a plan to help you achieve your goals; work your plan and ask for help along the way. Be aware of opportunities to continue to learn, and open your heart and mind to all the world has to offer. Believe in yourself and know that I believe in YOU.

You are on your way to owning your future success!

Sincerely,

A handwritten signature in black ink that reads 'Jennifer Burk'. The signature is fluid and cursive, written on a light-colored background.

Jennifer Burk
President and CEO
Junior Achievement of Central Indiana



To our outstanding students –

Welcome to JA JobSpark! Indianapolis Public Schools is thrilled to partner with Junior Achievement of Central Indiana, Eli Lilly and Company Foundation, Inc. and all of the sponsors and participating businesses to once again bring this exciting and informative event. The experience today is an outcome of tremendous preparation and planning – focused on your future success.



This event is designed to spark an interest in some of the many career possibilities available to you in the City of Indianapolis and Central Indiana. Use your time today to ask questions of the volunteers who represent lots of various career paths and roles. I'd also encourage you to visit the areas that you may not think you have an interest in right now. You never know what might "spark" your attention and lead you to want to be a part of a specific college and career pathway in high school!

You are in school every day to learn the skills and content you need to create the kind of life that you want. So, today, dream big! Learn more about how years from now you might put those skills to work building things, serving others and creating a brighter future for all of Indianapolis. You can also use today to help you get closer to deciding which career will be right for you.

Indianapolis Public Schools is committed to ensuring that when our students complete their PK-12th grade experience, they leave us prepared for whatever future they desire. JA JobSpark is an amazing opportunity to support that goal and for you to begin envisioning your future and learning how to turn your dreams into reality.

So, enjoy dreaming and learning today!

Sincerely,

A handwritten signature in black ink that reads "Dr. Aleesia L. Johnson".

Dr. Aleesia L. Johnson

Superintendent
Indianapolis Public Schools

Thanks to our Sponsors!

PRESENTING



ELI LILLY
AND COMPANY
FOUNDATION, INC.

PREMIER



Indiana University Health

DIAMOND



MARKEY'S
CREATING DEFINING EXPERIENCES



EDUCATION
NETWORK®

VIRTUAL PLATFORM



FUEL MERCHANDISE
GROUP



INDIANAKENTUCKYOHIO
REGIONAL COUNCIL of CARPENTERS

GOLD



EmployIndy



SAFETY MANAGEMENT
GROUP

VOLUNTEER PARTNER

Deloitte.

STUDENT SWAG

JPMORGAN CHASE & CO.

SILVER



BRONZE

Broad Ripple Animal Clinic, Celebrate Science Indiana, Corteva Agriscience, Ernst & Young, The Hagerman Group, Indiana Farm Bureau, Inc., MacAllister Machinery, University of Indianapolis: MICI-AHEC, Rehabilitation Hospital of Indiana, Schmidt Associates, Shiel Sexton, Stoops Freightliner and Quality Trailer

Thank You Cluster Co-Chairs!

- **Advanced Manufacturing, Engineering & Logistics**
 - Garrett Bray, Allison Transmission
 - Sylvester Smith, Eli Lilly and Company
- **Agriculture, Food & Natural Resources**
 - Tom Peet, Indiana Department of Natural Resources
 - Larry Sernyk, Celebrate Science Indiana
 - Bryon Silk, Indiana Department of Workforce Development
- **Architecture, Engineering & Construction**
 - Lynn Busby, Built to Succeed
 - Sarah Walker, The Hagerman Group
- **Business & Finance**
 - Amber Dixon, OneAmerica Financial Partners, Inc.
 - Tehea Harding, EmployIndy
 - Jake Hudson, OneAmerica Financial Partners, Inc.
- **Government, Law & Public Service**
 - Erika Cheney, EmployIndy
 - Bart Doan, Indiana Department of Workforce Development
 - José Medina, Indiana Commission for Higher Education
- **Health & Life Sciences**
 - Ann Yates, Indiana University Health
 - Ashley Zappia, Roche Indianapolis
- **Hospitality & Tourism**
 - Lyndsey Hanna, Consulting by Lyndsey
 - Don Steffy, Indianapolis Ballet
- **Technology**
 - Nick Birch, Eleven Fifty Academy
 - Pat Rhodes, Eleven Fifty Academy



2016-2022 IMPACT

2016
7,000 Students
40 Schools
115 Businesses
100 Hands-On Experiences
400 Educators

2017
8,700 Students
49 Schools
120 Businesses
125 Hands-On Experiences
500 Educators

2018
9,600 Students
62 Schools
130 Businesses
150 Hands-On Experiences
650 Educators

2019
10,700 Students
69 Schools
150 Businesses
250+ Hands-On Experiences
700 Educators

2020 - Virtual
10,248 Students
67 Schools
102 Businesses
300+ Virtual Experiences
450 Educators

2021 - Virtual
10,726 Students
69 Schools
102 Businesses
400+ Virtual Experiences
534 Educators

2022
10,900+ Students
72 Schools
100+ Businesses
200+ Hands-On Experiences
700 Educators

JA JobSpark

JA JobSpark Career Clusters



Advanced Manufacturing, Engineering & Logistics

Planning, managing and performing the processing of materials into intermediate or final products and related professional and technical support activities such as production planning and control, maintenance and manufacturing/process engineering. Planning, management, and movement of people, materials, and goods by road, pipeline, air, rail and water and related professional and technical support services such as transportation infrastructure planning and management, logistics services, mobile equipment and facility maintenance.



Agriculture, Food & Natural Resources

Production, processing, marketing, distribution, financing, and development of agricultural commodities and resources including food, fiber, wood products, natural resources, horticulture, and other plant and animal products/resources.



Architecture, Engineering & Construction

Designing, planning, managing, building and maintaining the built environment.



Business & Finance

Planning, organizing, directing and evaluating business functions essential to efficient and productive business operations. Business management and administration career opportunities are available in every sector of the economy. Planning, services for financial and investment planning, banking, insurance, and business financial management.



Government, Law & Public Service

Executing governmental functions to include governance; national security; foreign service; planning; revenue and taxation; regulation; management and administration at the local, state, and federal levels. Planning, managing, and providing legal, public safety, protective services and homeland security, including professional and technical support services.



Health & Life Sciences

Planning, managing, and providing therapeutic services, diagnostic services, health informatics, support services, and biotechnology research and development.



Hospitality & Tourism

Managing, marketing and operating restaurants and other food services, lodging, attractions, recreation events and travel related services. Designing, producing, exhibiting, performing, writing, and publishing visual and performing arts and entertainment services.



Technology

Designing, developing, supporting and managing hardware, software, multimedia and systems integration services.

Do *you* Have The Skills Indiana's Employers Are Searching For?

INDIANA EMPLOYERS WANT HIGHLY-SKILLED EMPLOYEES. DEVELOPING THESE 18 **EMPLOYABILITY SKILLS** CAN HELP YOU LAND YOUR DREAM JOB!

MINDSETS

Lifelong Learning



Demonstrate willingness to work and learn, and continually apply new knowledge.

Possess belief in own ability to succeed and assert self when necessary.



SELF-CONFIDENCE

LEARNING STRATEGIES

Effective COMMUNICATION

Apply skills to clearly, effectively, and convincingly express ideas and messages to others appropriate to the environment.

DECISION-MAKING

Utilize critical thinking skills and perspectives of others to make informed decisions based on options, rewards, risks, limits, and goals.



INITIATIVE

Apply self-motivation and self-direction to work and learning.



ATTENTION TO Detail

Achieve thoroughness and accuracy when accomplishing a task.



PROBLEM SOLVING

Apply critical and creative thinking skills to resolve problems.



APTITUDE & Awareness

Identify and communicate individual interests and skills that align coursework and experiences to potential career paths and to in-demand occupations.



WORK ETHIC

Self-Discipline

Demonstrate self-control and behave in accordance to rules with minimal direction.



Successfully carry out expectations with minimal supervision.



INDEPENDENCE

PERSEVERANCE

Demonstrate endurance and capacity to complete tasks.

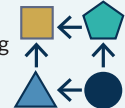


Time Management & Organization

Plan and organize long and short-term goals while understanding how to balance school, home, and community activities.

ADAPTABILITY

Manage transitions and adjust to changing situations and responsibilities.



INTEGRITY

Act in a trustworthy and honest manner.



PROFESSIONALISM

Demonstrate skills and behaviors appropriate for school and work.

SOCIAL & EMOTIONAL SKILLS

CONNECTION



Demonstrate the ability to network with others through social awareness and cultural sensitivity.

REGULATION

Recognize and manage one's emotions.



Collaboration

Work well with others in a team.



How do you decide which career is best for you?

Retail Salespersons
HUMAN RESOURCE SPECIALIST
NURSE PRACTITIONER
General and Operations Managers
Elementary and Secondary School Teachers
SOFTWARE DEVELOPERS
Medical Records Administration
POLICE AND FIREFIGHTERS
Accountants and Auditors
PHYSICAL THERAPIST
MARKETING SPECIALIST
AVIATION MAINTENANCE
PLUMBERS
CONSTRUCTION MANAGERS



Visit **IndianaCareerExplorer.com** your best source for career exploration and graduation planning.

Plan your future by exploring careers and the education or training needed to make your dreams come true.

- Learn which jobs will be in-demand in the future
- Assess your interests and skills
- Develop a plan to get the education and training you need



Supported by:



CELEBRITIES & THEIR FIRST JOBS



BEYONCÉ

Singer & Songwriter

Beyoncé worked in her mom's hair salon sweeping up hair before her singing career.



CHRIS HEMSWORTH

Actor

Before he became Thor on the big screen, Chris worked in a pharmacy.



BRADLEY COOPER

Actor & Movie Producer

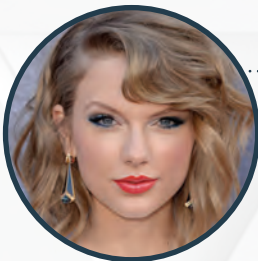
Bradley made a living as a doorman in a New York City hotel before starting his acting career.



MELISSA MCCARTHY

Actress

Before she was the star of movies like *Bridesmaids* and *The Heat*, Melissa worked as a barista at Starbucks.



TAYLOR SWIFT

Singer & Songwriter

Before her first big album, Taylor worked on her family's Christmas tree farm shaking bugs out of the trees.



KANYE WEST

Rapper & Music Producer

Kanye worked as a sales associate at Gap during his teen years.



DWAYNE JOHNSON

Actor & Former Pro Wrestler

Though he's now one of the highest-paid actors in Hollywood, 'The Rock' worked as a dishwasher at the age of 13.



MEGHAN MARKLE

Duchess of Sussex

Meghan Markle worked as a freelance calligrapher and taught bookbinding to support herself between acting jobs.

JA 4E INITIATIVE

Employment
Enrollment
Enlistment
Entrepreneurship

The pathways for post-
secondary success

Learn more at jaiindy.org



Junior
Achievement™
of Central Indiana



EDUCATION
NETWORK®

Forging an equitable and inclusive
education-employment system to
better meet learners' needs.

Strada Education Network® engages with partners across education, nonprofits, business and government to focus relentlessly on students' success throughout all phases of their learning and working lives. Together, we address critical postsecondary education and workforce challenges through research, grant making and investments, and on-the-ground solutions.

Join us.



Ascension St. Vincent is proud to support and encourage youth
to explore health care opportunities!

Come visit us in the Health and Life Sciences Cluster!



Deloitte.



Inspiring future leaders

Deloitte is committed to making an impact that matters in our communities. We are proud to work with JA JobSpark and help advance its efforts to improve lives by mobilizing the caring power of communities.

www.deloitte.com

Copyright © 2022 Deloitte Development LLC. All rights reserved.



**FUEL MERCHANDISE
GROUP**

Fuel Merchandise Group is proud to
partner with Junior Achievement
to educate, engage and inspire students!

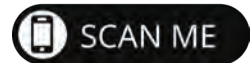
Fuel the causes that matter to you most.
<https://www.fuelmerchandise.com>

BUILD YOUR FUTURE



Find your path with the Carpenters Union.

- Hands-on learning in the shop & on-the-job
- Earn a debt-free college degree
- Employer-paid benefits included healthcare, vision, dental, pension, & an annuity



LEARN MORE TODAY AT WWW.CARPENTERS.COM

"Our vision for EmployIndy is clear: for all Marion County residents to have access to services and training necessary to secure a livable wage and grow in a career that meets employer demand for talent."

Angela Carr Klitzsch
EmployIndy President & CEO

EmployIndy

GUIDING MARION COUNTY'S WORKFORCE

Learn more about EmployIndy and our programs at www.employindy.org



Leading the world's transition to **greener, smarter** energy, right here in Indianapolis.

IPL is now **AES Indiana**

We are accelerating the future of energy, together
aesindiana.com/hellofuture

aes Indiana

SMG

SAFETY MANAGEMENT GROUP

Proud supporter of JA JobSpark and Indianapolis area youth.

Career builder of health, safety, and environmental professionals.

SafetyManagementGroup.com



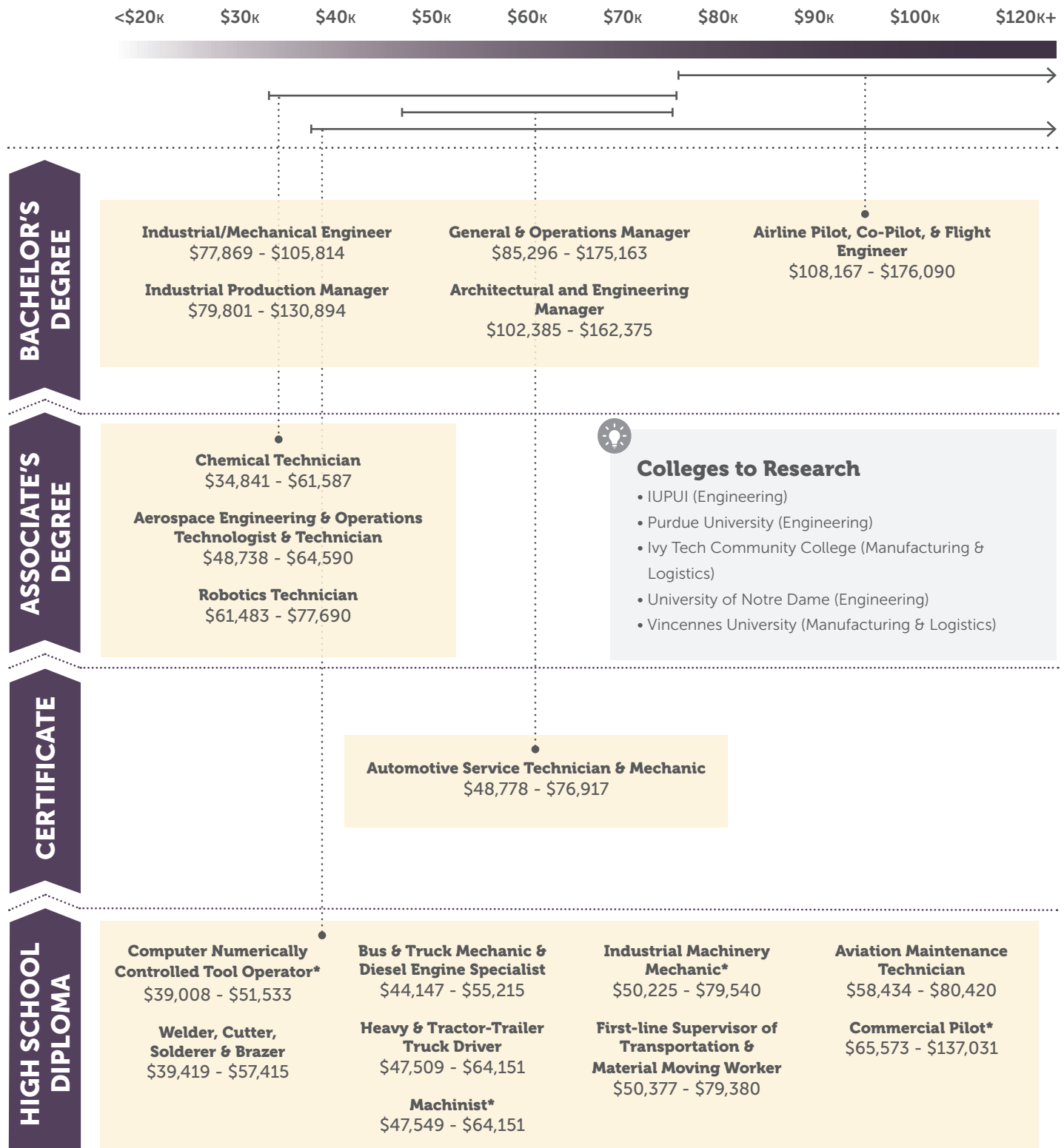
Fresh. Local. Catering.

(317) 536-1305 • Sahms.com
catering@sahms.com



ADVANCED MANUFACTURING, ENGINEERING & LOGISTICS

Do you enjoy making things or working with your hands? Do you enjoy math and science classes? Are you creative and like the idea of inventing things?



Occupations are a representation of jobs in the state of Indiana. Salaries range from the 25th to 75th percentiles.

*Career also offers certification programs.



A special thank you to our partners!



Polytechnic Institute Indianapolis



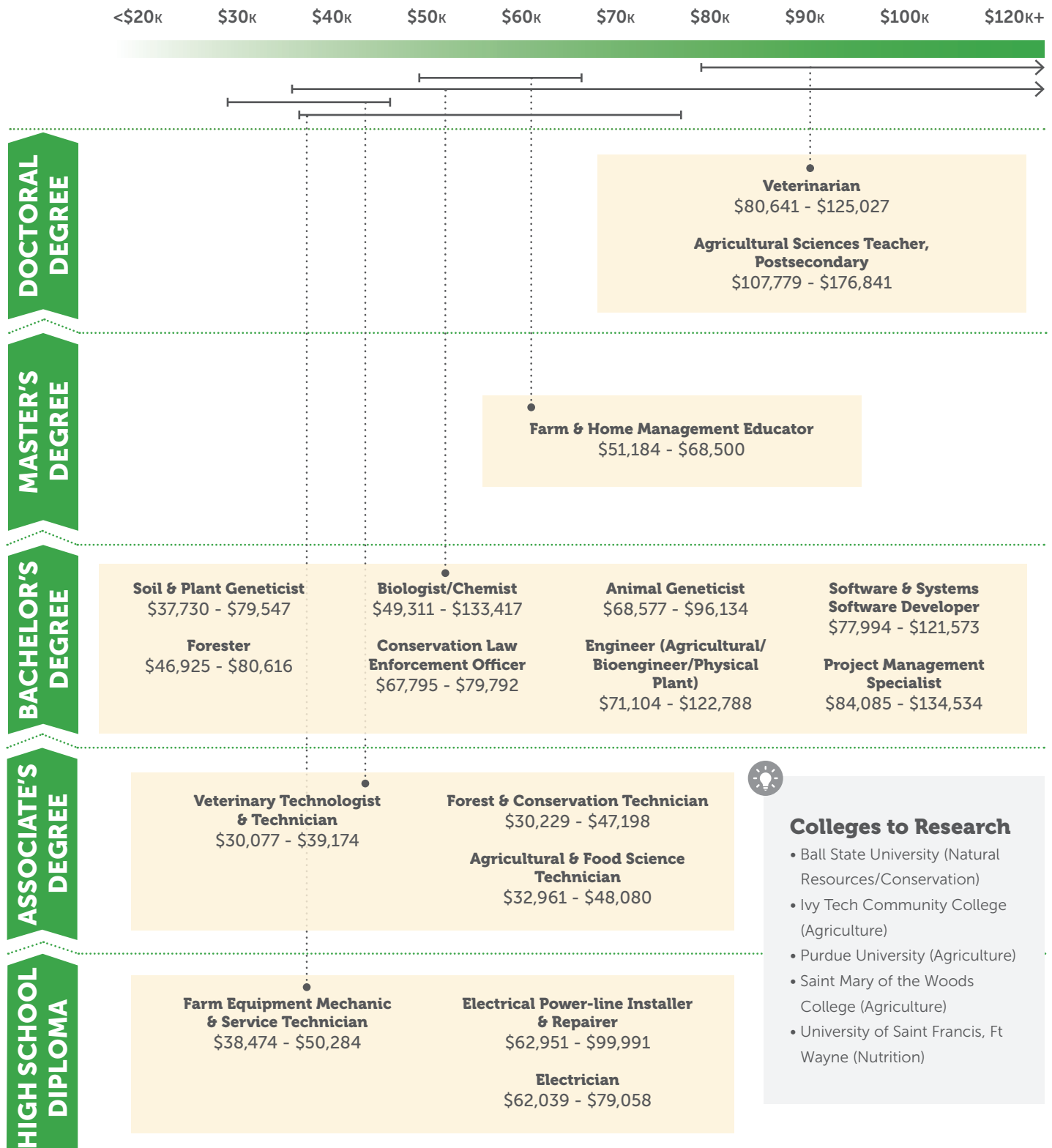
STEM Education Works®





AGRICULTURE, FOOD & NATURAL RESOURCES

Do you want to help feed and clothe the world? Are you interested in protecting our environment? Do you like to be outside or work with animals?



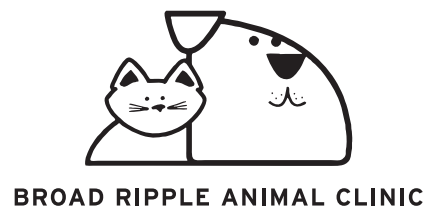
Occupations are a representation of jobs in the state of Indiana. Salaries range from the 25th to 75th percentiles.



AGRICULTURE, FOOD & NATURAL RESOURCES



A special thank you to our partners!





ARCHITECTURE, ENGINEERING & CONSTRUCTION

Do you like to build structures that last a lifetime? Do you like to create things and work with your hands?

<\$20k \$30k \$40k \$50k \$60k \$70k \$80k \$90k \$100k \$120k+

BACHELOR'S DEGREE

Interior Designer
\$46,880 - \$72,111

Civil Engineer
\$64,298 - \$103,995

Surveyor
\$57,444 - \$97,437

Construction Manager
\$76,864 - \$110,942

Architect
\$62,590 - \$101,829

ASSOCIATE'S DEGREE

Industrial Engineering Technologist & Technician
\$38,221 - \$63,644

HVAC Technician
\$38,996 - \$63,133



Colleges to Research

- Ball State University (Architecture)
- Indiana State University (Construction Management & Safety)
- IUPUI (Architecture)
- Purdue University (Construction/Engineering)
- Rose-Hulman Institute of Technology (Engineering)

HIGH SCHOOL DIPLOMA

Construction Laborer
\$37,644 - \$51,985

Structural Iron & Steelworker
\$46,729 - \$79,058

Electrician
\$48,746 - \$80,962

Operating Engineer & Other Construction Equipment Operator
\$50,632 - \$80,370

Carpenter
\$39,918 - \$62,880

Plumber, Pipefitter, & Steamfitter
\$48,178 - \$81,758

Brickmason & Blockmason
\$49,121 - \$67,132

Occupational Health & Safety Technician
\$66,412 - \$95,044

Welder, Cutter, Solderer, & Brazier
\$40,856 - \$62,636

Occupations are a representation of jobs in the state of Indiana. Salaries range from the 25th to 75th percentiles.

A special thank you to our partners!

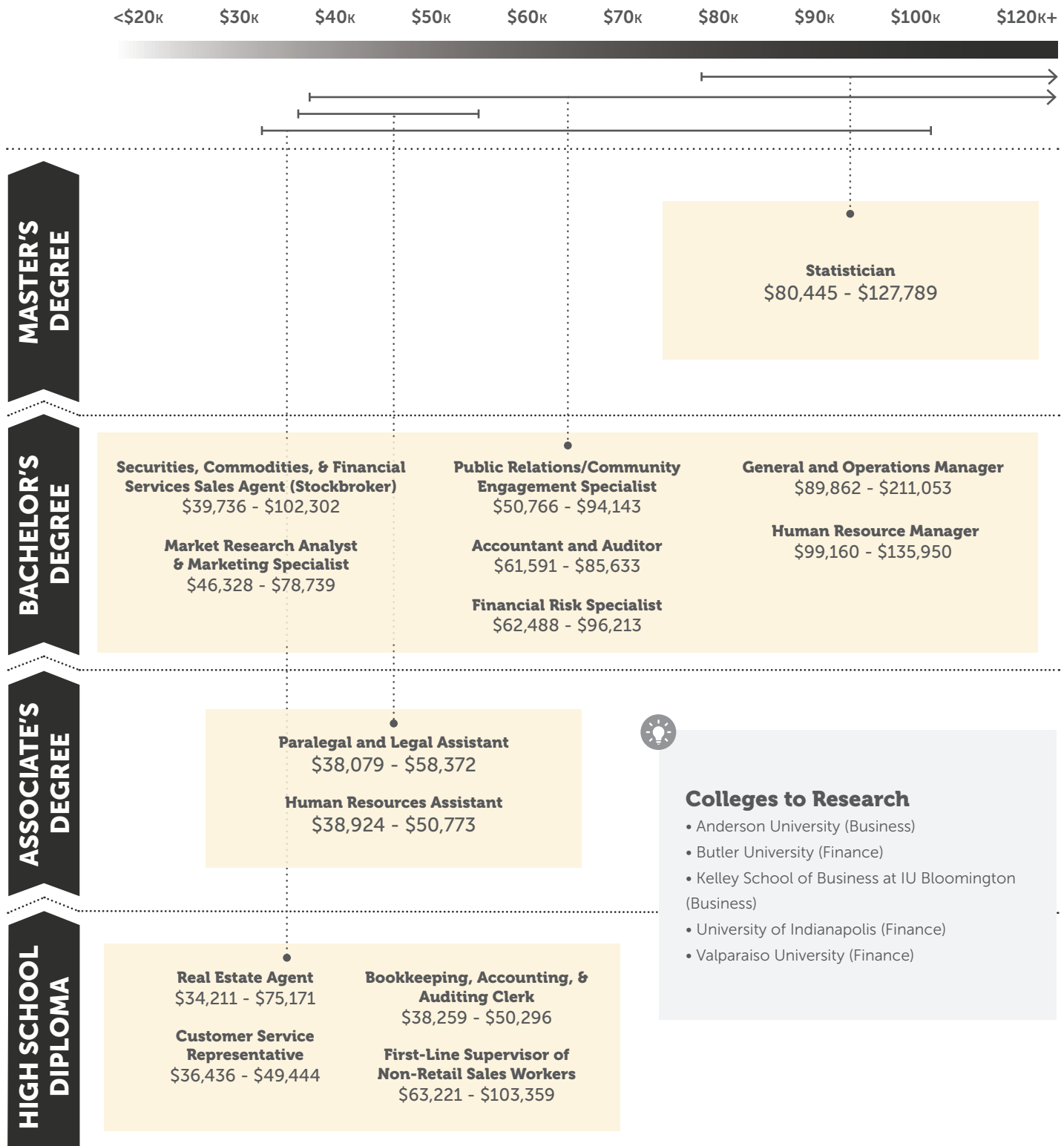


ARCHITECTURE, ENGINEERING
& CONSTRUCTION



BUSINESS & FINANCE

Do you wonder how businesses work? Are you interested in how businesses choose who to hire? Do you want to know which companies are good investments?



Colleges to Research

- Anderson University (Business)
- Butler University (Finance)
- Kelley School of Business at IU Bloomington (Business)
- University of Indianapolis (Finance)
- Valparaiso University (Finance)

Occupations are a representation of jobs in the state of Indiana. Salaries range from the 25th to 75th percentiles.

A special thank you to our partners!



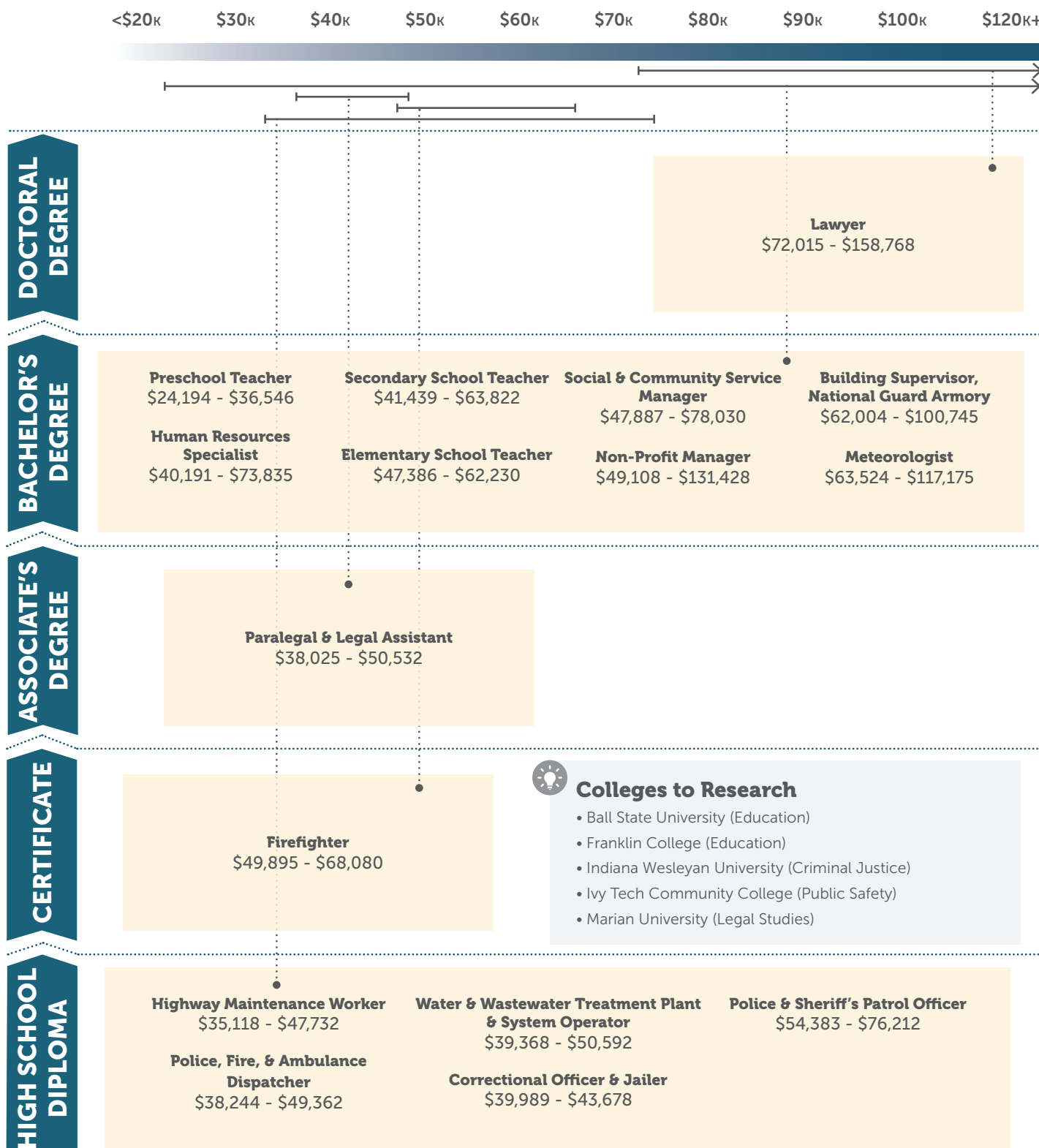
BUSINESS & FINANCE





GOVERNMENT, LAW & PUBLIC SERVICE

Are you willing to serve others? Is it important to you to make the world fair and just? Are you calm in a crisis?



Colleges to Research

- Ball State University (Education)
- Franklin College (Education)
- Indiana Wesleyan University (Criminal Justice)
- Ivy Tech Community College (Public Safety)
- Marian University (Legal Studies)

Occupations are a representation of jobs in the state of Indiana. Salaries range from the 25th to 75th percentiles.

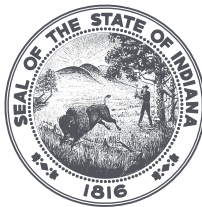
A special thank you to our partners!

BEST BUDDIES[®]



Early Learning
INDIANA

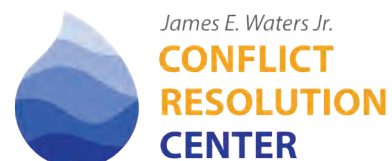
EmployIndy



INDIANA COMMISSION *for*
HIGHER EDUCATION



INDIANA DEPARTMENT OF
WORKFORCE
DEVELOPMENT



A PROGRAM OF THE INDY PUBLIC SAFETY FOUNDATION

myIPS



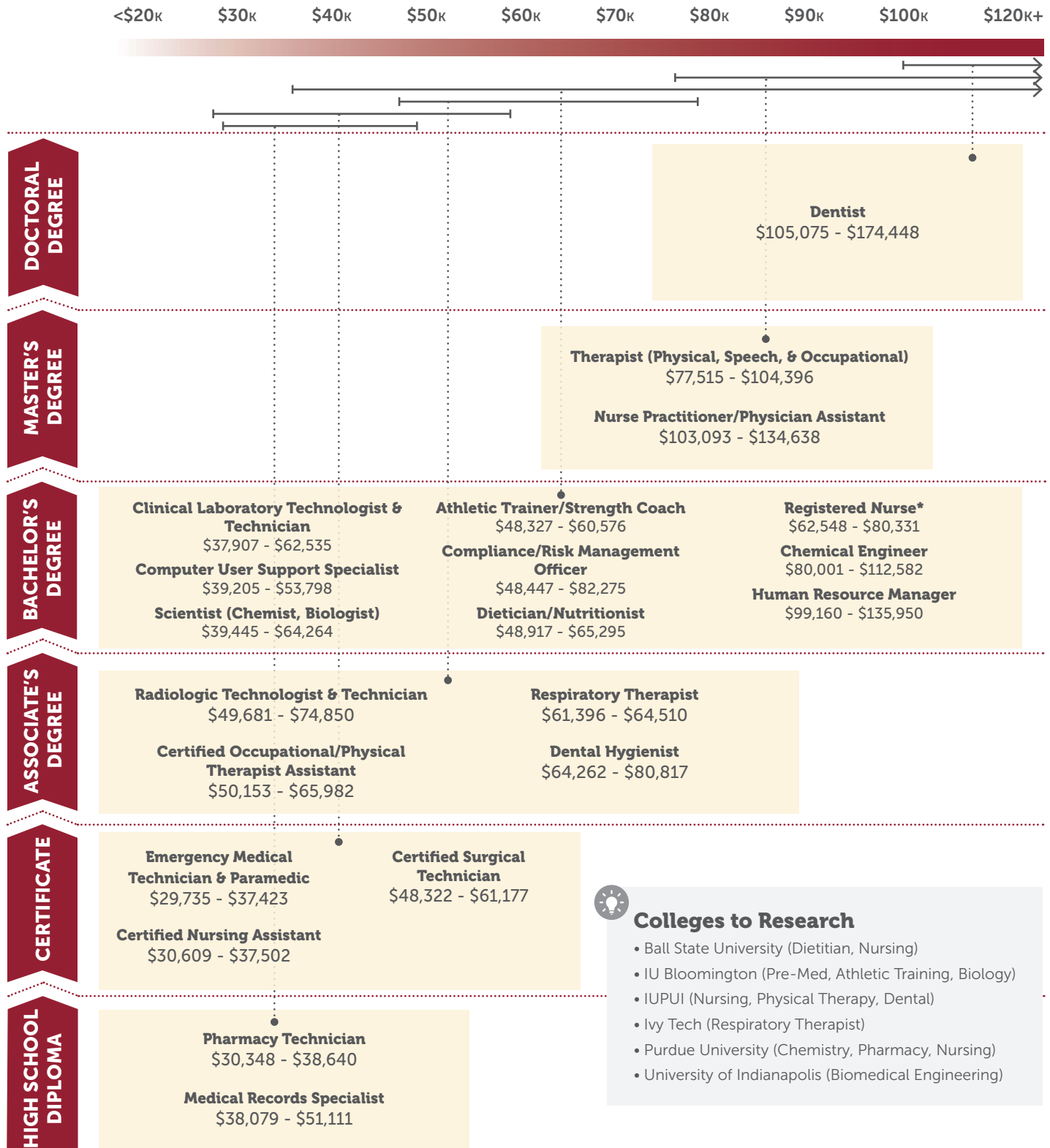
GOVERNMENT, LAW & PUBLIC SERVICE





HEALTH & LIFE SCIENCES

Do you enjoy helping others? Are you interested in how the human body works? Is science one of your favorite subjects?



Colleges to Research

- Ball State University (Dietitian, Nursing)
- IU Bloomington (Pre-Med, Athletic Training, Biology)
- IUPUI (Nursing, Physical Therapy, Dental)
- Ivy Tech (Respiratory Therapist)
- Purdue University (Chemistry, Pharmacy, Nursing)
- University of Indianapolis (Biomedical Engineering)

Occupations are a representation of jobs in the state of Indiana. Salaries range from the 25th to 75th percentiles.

*Career also offers certification programs.

A special thank you to our partners!



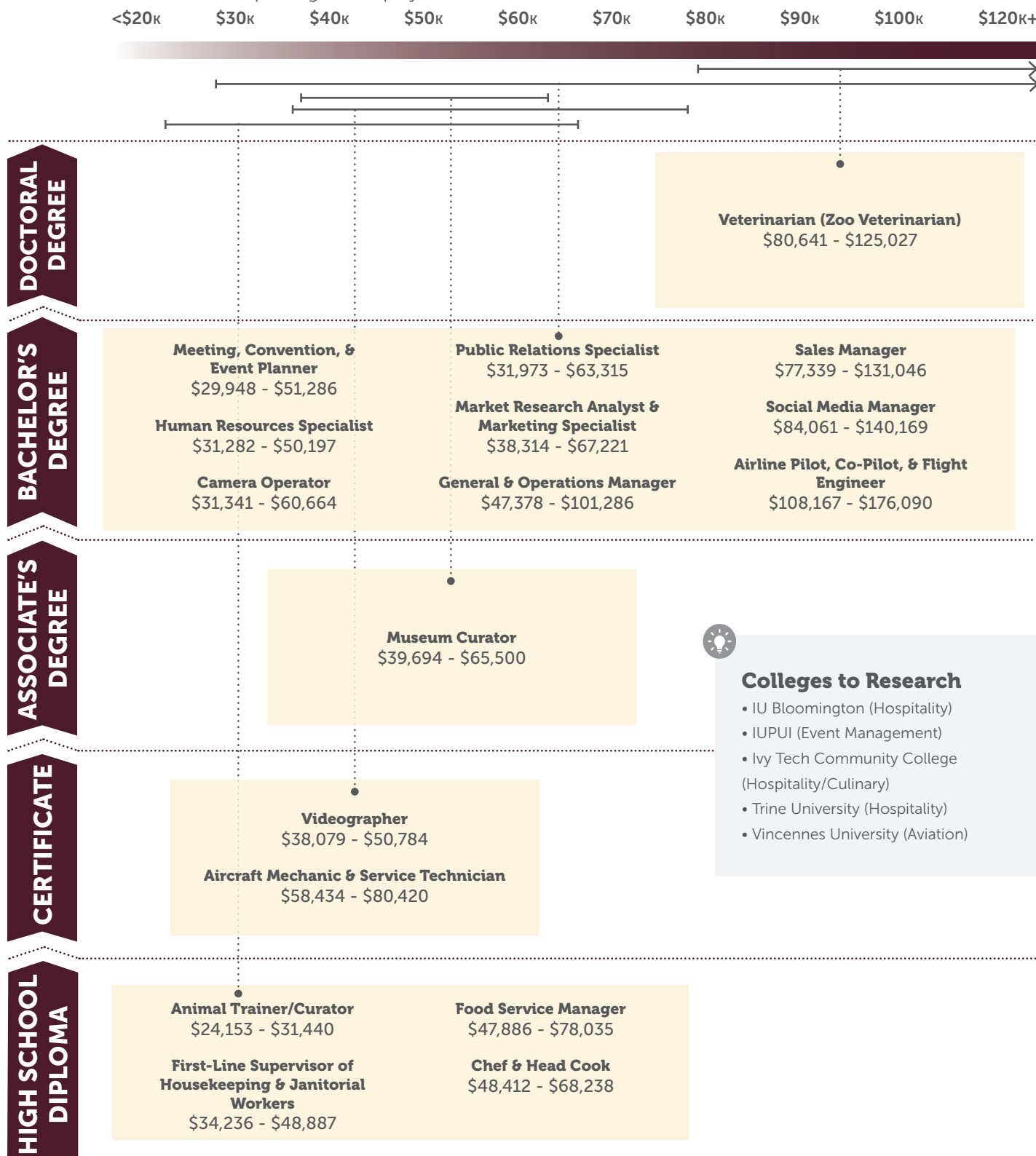
HEALTH & LIFE SCIENCES





HOSPITALITY & TOURISM

Do you enjoy the excitement that comes from planning big events? Would you enjoy hosting others and making them feel welcome? Would you enjoy creating a great guest experience at a hotel, restaurant, sporting event, play, or concert?



Colleges to Research

- IU Bloomington (Hospitality)
- IUPUI (Event Management)
- Ivy Tech Community College (Hospitality/Culinary)
- Trine University (Hospitality)
- Vincennes University (Aviation)

Occupations are a representation of jobs in the state of Indiana. Salaries range from the 25th to 75th percentiles.

A special thank you to our partners!



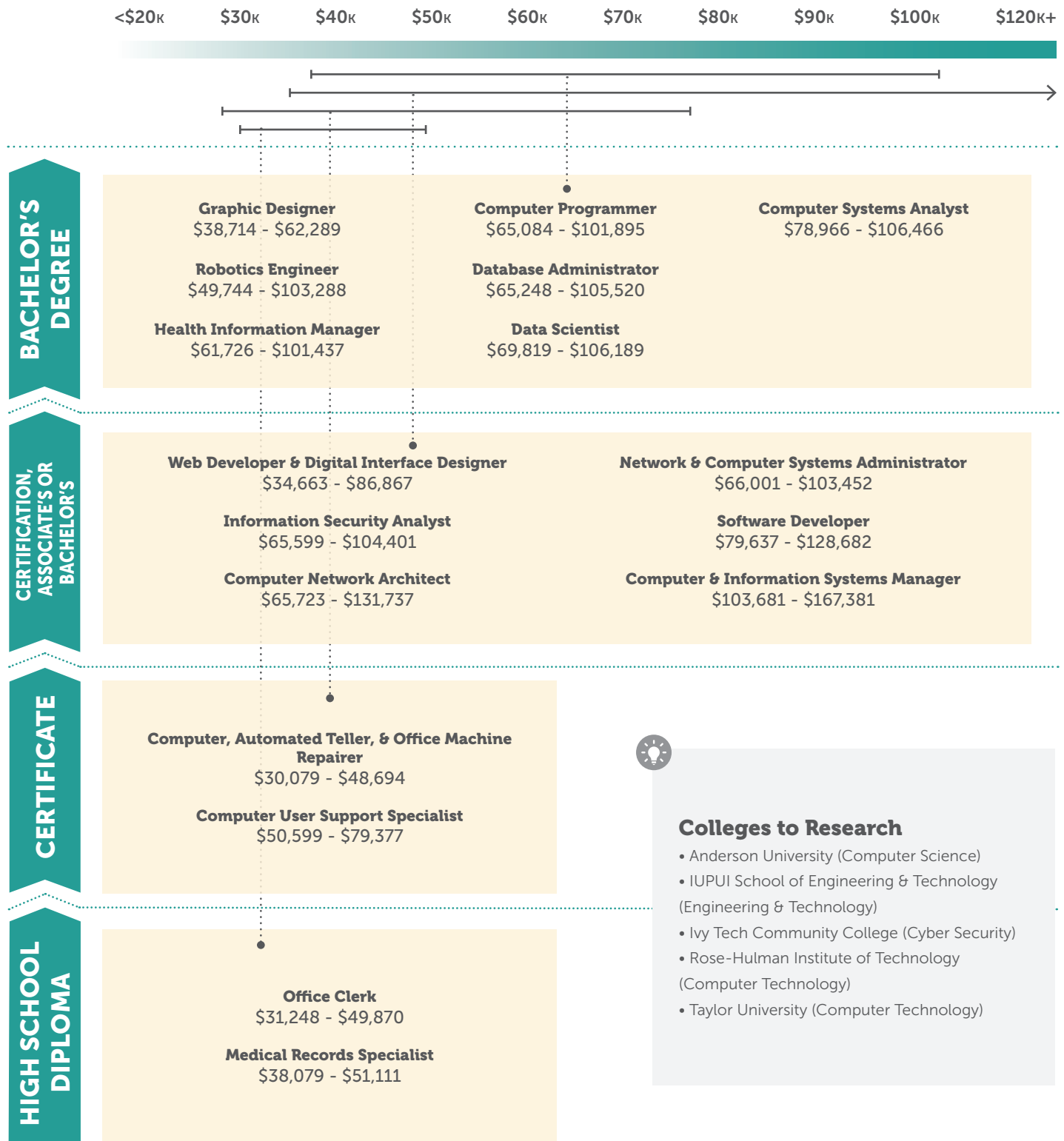
HOSPITALITY & TOURISM





TECHNOLOGY

Do you enjoy working with the latest computer technologies? Can you solve problems in a creative way? Do you have fun working on team projects?



Colleges to Research

- Anderson University (Computer Science)
- IUPUI School of Engineering & Technology (Engineering & Technology)
- Ivy Tech Community College (Cyber Security)
- Rose-Hulman Institute of Technology (Computer Technology)
- Taylor University (Computer Technology)

Occupations are a representation of jobs in the state of Indiana. Salaries range from the 25th to 75th percentiles.

A special thank you to our partners!



Eleven Fifty Academy



ENTHRALL



FIVESTAR



HEALTH INFORMATION
MANAGEMENT

SCHOOL OF INFORMATICS
AND COMPUTING



INDY WOMEN
IN TECH



POWDERKEG.

Resultant



TECHNOLOGY

DID YOU KNOW?



**YOU HAVE
RIGHTS IN THE
WORKPLACE!**

[Be a leader. Identify hazards. Take action.]

By doing so, you can protect yourself, your colleagues, and your community.
Taking the extra steps to keep workplaces safe saves lives.



Get quality training beforehand.

Quality training on how to complete a job or use equipment safely helps prevent injuries and can save lives. Make sure that you are knowledgeable in any task you've been assigned.



Ask questions while on-site.

Protecting yourself and those around you is important. Consider asking the following questions: Can what I am doing be done in a safer way? How can this task be made safer for everyone? Is there a way that I can get rid of this hazard?



Report any and all hazards.

A hazard is any source of potential damage, harm or adverse effect on someone or something. If you see a hazard that needs to be fixed to make your job safer or prevent an injury, work with your supervisor and coworkers to find a solution.



Stop (or do not start) tasks if you don't feel safe.

It's okay to ask for more training or safer equipment if you are asked to perform a task that makes you or your coworkers feel at-risk or might injure someone.

See common hazards and get tips on preventing them!



SCAN ME



BCSP
FOUNDATION

JUNIOR ACHIEVEMENT

Junior Achievement equips young people with the skillset and mindset to build thriving communities through experiential learning programs that focus on postsecondary and career readiness, employability and life skills, financial wellness, entrepreneurship and STEM.



Junior
Achievement™
of Central Indiana

www.jaindy.org

Contributing Companies and Organizations

1st Maker Space
 AES Indiana
 Allied Automation
 Allison Transmission
 American Dairy Association
 Indiana, Inc.
 American Senior Communities
 Ascension St Vincent
 Ascension St. Vincent Sports
 Performance
 BD/Becton Dickinson
 Best Buddies
 BMO Harris Bank
 Board of Certified Safety
 Professionals
 Broad Ripple Animal Clinic
 Build Your Future Indiana
 Built to Succeed
 Celebrate Science Indiana
 Community Health Network
 Consulting By Lyndsey
 Corteva Agriscience
 Deloitte
 DJ gNo
 Donate Life Indiana
 Early Learning Indiana
 Elanco Animal Health
 Eleven Fifty Academy
 Eli Lilly and Company
 Eli Lilly and Company Foundation
 EmployIndy
 Enthrall
 Ermco
 Ernst & Young
 Eskenazi Health
 F.A. Wilhelm
 FBI Indianapolis
 Fern
 Finish Line
 First Internet Bank
 Five Star Technology Solutions
 Four Point Design
 Fuel Merchandise Group
 Huntington Bank
 IBEW Local 481
 Ignition
 Indiana Commission for Higher

Education
 Indiana Construction Roundtable
 Indiana Department of Natural
 Resources
 Indiana Department of Workforce
 Development
 Indiana Donor Network
 Indiana Farm Bureau
 Indiana Fashion Foundation
 Indiana General Assembly
 Indiana Mineral Aggregates
 Association
 Indiana National Guard
 Indiana Owned/Indiana Gifts
 Indiana Society of Professional
 Land Surveyors
 Indiana State Fairgrounds and
 Event Center
 Indiana State Museum and
 Historic Sites
 Indiana State University
 Indiana University Health
 Indiana/Kentucky/Ohio Regional
 Council of Carpenters
 Indianapolis Ballet
 Indianapolis Fire Department
 Indianapolis Indians
 Indianapolis Public Schools
 Indianapolis Zoo
 Indy Police Athletic & Activities
 League
 Indy Public Safety
 Indy Women in Tech, Inc.
 IUPUI School of Informatics &
 Computing
 Ivy Tech Automotive Technology
 Ivy Tech Community College,
 Central Indiana
 JPMorgan Chase & Co.
 JW Marriott Indianapolis
 Let Kate Cook
 LIFT Academy
 MacAllister Machinery
 Markey's
 McKenzie Center for Innovation
 and Technology
 MSD Lawrence Township

MSD Wayne Township
 National Weather Service
 Niagara Bottling, LLC
 OneAmerica Financial
 Partners, Inc.
 Pacers Sports & Entertainment
 Pepper Construction of Indiana
 Powderkeg
 Purdue University College of
 Agriculture
 Purdue Extension Marion County
 Purdue Polytechnic Institute
 Indianapolis
 R.E. Dimond and Associates, Inc.
 Regions Bank
 Rehabilitation Hospital of Indiana
 Republic Airways
 Resultant
 Roche Indianapolis
 Safety Management Group
 Sahm's Hospitality Group
 Schmidt Associates
 Shiel Sexton
 STAR Financial Bank
 STEM Education Works
 Stoops Freightliner and Quality
 Trailer
 Strada Education Network
 The Capital Group Companies
 The Children's Museum of
 Indianapolis
 The Hagerman Group
 The Latinas Welding Guild
 The Waters Conflict Resolution
 Center
 TopShot Aerial Photography
 Trendy Minds
 UA Local 440 Plumbers,
 Steamfitters and HVAC
 Technicians
 University of Indianapolis:
 MICI-AHEC
 UPS
 Vincennes Aviation
 Technology
 Visit Indy
 Women & Hi Tech

Thank You to Our JA JobSpark Participating Schools

Achieve Virtual Education Academy	James A. Garfield School 31
Alexandria-Monroe Junior/Senior High School	James Whitcomb Riley School 43
Arlington Middle School	KIPP Indy College Prep Middle School
Attica Junior-Senior High School	Lebanon Middle School
Avondale Meadows Middle School	Lincoln Middle School
Beech Grove Middle School	Longfellow Medical/STEM Middle School 28
Belzer Middle School	Lynhurst 7th & 8th Grade Center
Butler Lab School 55	Matchbook Learning at Wendell Phillips
Butler Lab School 60	Merle Sidener Gifted Academy
Carmel Middle School	New Augusta Public Academy North
Center for Inquiry 2	Newcomer Program
Center for Inquiry 27	Northview Middle School
Center for Inquiry 70	Northwest Middle School
Center for Inquiry 84	Plainfield Middle School
Chapel Hill 7th & 8th Grade Center	Positive Supports Academy
Christel House Academy South	Raymond Middle School
Christel House Academy West	Renaissance Academy Charter School
Clay Middle School	ROOTS Program
Cold Spring School	Rousseau McClellan School 91
Creekside Middle School	Saint Simon the Apostle School
Creston Middle School	Sanders School
Daniel Webster School 46	Southport Middle School
Decatur Middle School	St. Luke Catholic School
Eastwood Middle School	St. Richard's Episcopal School
Edison School of the Arts 47	STEP Ahead Academy
Fall Creek Valley Middle School	Stonybrook Middle School
Francis W. Parker School 56	SUPER School 19
Frankfort Middle School	The PATH School
George W. Carver School 87	Traders Point Christian School
George W. Julian School 57	Turning Point Schools Indy
Guion Creek Middle School	URBAN ACT at Washington Irving
H. L. Harshman Middle School	Vision Academy at Riverside
Hamilton Heights Middle School	Warren Online Academy
Holy Cross Lutheran School	Western Boone Junior and Senior High School
Horizon Christian School	Westlane Middle School
Indiana School for the Blind	William Penn School 49

Glossary of Terms

Associate's Degree: A degree earned by a student who has completed two years of study at a junior college, college, or university in the United States.

Bachelor's Degree: A degree earned by a student who has completed four years of study at a college or university.

Career Cluster: A grouping of jobs and industries related to skills and products.

Community College: A school one attends after high school that offers courses leading to an Associate's degree (2-year).

Employability Skills: Personal attributes and abilities not directly tied to a specific job title but which are needed in most jobs; also known as "soft skills."

Entrepreneur: A person who starts a business and is willing to risk loss in order to make money.

Financial Aid: Money that is given (scholarships and grants) or lent (loans) to students to help pay for their education.

Graduate Degree: A two-year (Master's) or four-year degree (Doctorate or Ph.D.) earned by a student who has already earned a Bachelor's Degree.

HSE: High School Equivalency Diploma, formerly known as a GED.

Interests: A person's preferred activities or hobbies.

Job Outlook: A prediction of careers that will be in high-demand in the future.

Post-Secondary Education: Any education completed past high school.

Private College: Colleges that don't receive primary funding from the state and federal government. Private colleges rely on tuition, fees, endowments, and other private sources for funding.

Public College: Institutions that receive most of their funding from the states where they are located.

Skills: A person's talents or abilities.

STEM: The study of Science, Technology, Engineering, and Mathematics.

Technical Skills: The abilities and knowledge used in a specific profession.

Trade Certification or Professional Certification: A certification earned to assure ability to perform a job or task.

Transcript: An official record of a student's grades.

Undergraduate Degree: An academic degree earned by completing undergraduate courses, typically an Associate's Degree or Bachelor's Degree.



Our team is changing healthcare for the better.

IU Health is Indiana's leading healthcare system, with 16 hospitals and nearly 40,000 team members. As you look toward your future, IU Health is here to provide you with inspiring and meaningful careers for the good of every patient.

Learn more by attending the Health and Life Science Career Cluster sessions and visit iuhealth.org/JAJobSpark.



© 2022 IUHealth 6/22 IUH#37819

LET MARKEY'S HELP YOU CREATE YOUR NEXT DEFINING EXPERIENCE

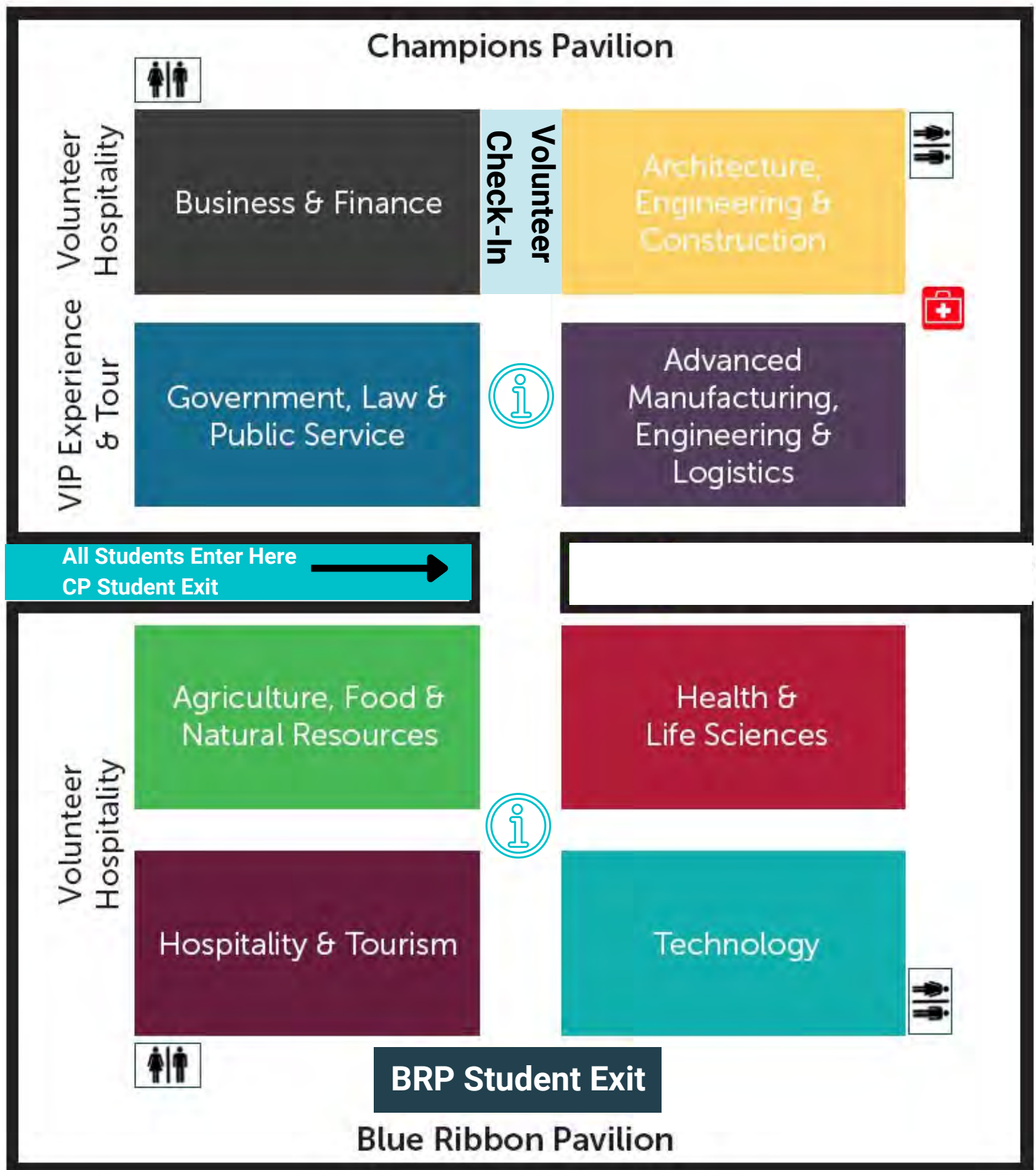


Live Event Management
Hybrid & Virtual Services
Technical Production
Equipment Rental
Stage & Set Design

MARKEYS.COM

MARKEY'S
CREATING DEFINING EXPERIENCES

JA JobSpark Event Map



JA JobSpark

Junior Achievement of Central Indiana
7435 N Keystone Avenue
Indianapolis, IN 46240
(317) 252-5900

jajobspark.org



Junior
AchievementTM
of Central Indiana